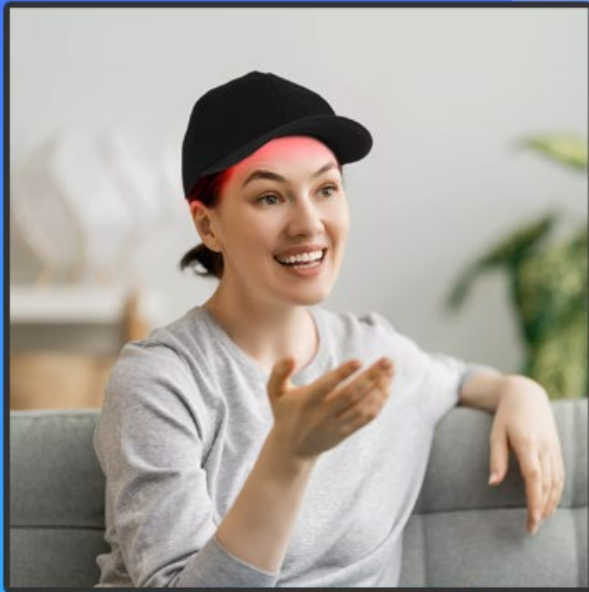


# RED LIGHT THERAPY CAP

SAFE, EASY TO USE



NON-INVASIVE

BRAIN THERAPY &  
REJUVENATION

# HOW IT WORKS FOR BRAIN THERAPY & REJUVENATION

The brain suffers from many disorders that can be classified into three broad groupings:

Traumatic events (stroke, traumatic brain injury, and global ischemia), degenerative diseases (dementia, Alzheimer's and Parkinson's), and psychiatric disorders (depression, anxiety, post-traumatic stress disorder).

There is a body of evidence that all these seemingly diverse conditions can be beneficially affected by applying light to the head. There is even the possibility that PBM could be used for cognitive enhancement in normal healthy people.

Visit our Online Research Library and Media Page for Specific Studies & Research Information

**[www.lltproducts.com](http://www.lltproducts.com)**

## BRAIN REJUVENATION

# RED LIGHT THERAPY CAP



BRAIN THERAPY & REJUVENATION



# RED LIGHT THERAPY CAP

## INCLUDED IN THE PACKAGE



**BRAIN THERAPY & REJUVENATION**

**PLEASE CAREFULLY READ THE INCLUDED OPERATING MANUAL AND ONLY USE AS DIRECTED.**